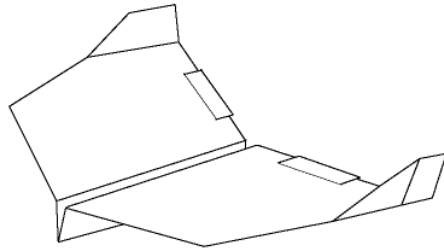
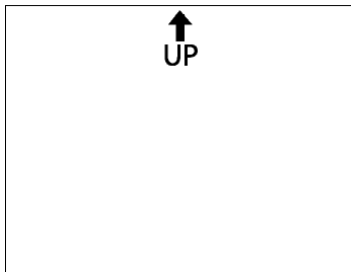


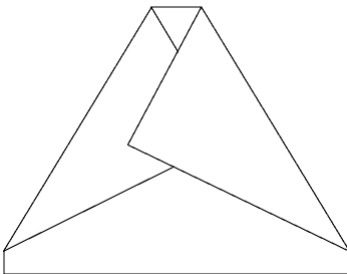
## Raptor



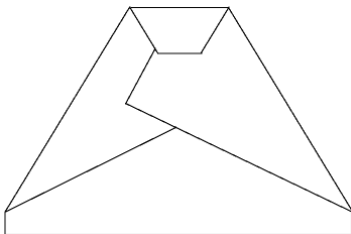
This plane is an excellent outdoor glider. Launch straight up and it will glide down in big lazy circles. Adjust the elevator on the back edge of the wing to perfect the flight characteristics.



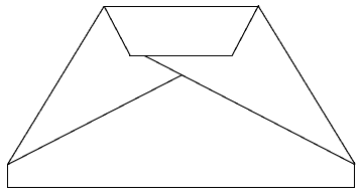
Orient the template so that the “UP” arrow is at the top of the page. Then flip the paper over so that none of the fold lines are showing.



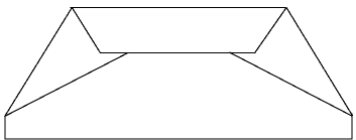
Fold the top right and top left corners in until fold lines 1 appear and crease along the dotted line.



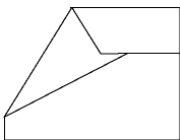
Fold the nose down toward you and crease along fold line 2.



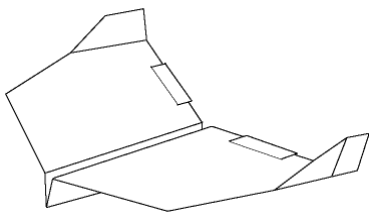
Fold the nose down toward you again and crease along fold line 3.



Fold the top edge down toward you again and crease along fold line 4.

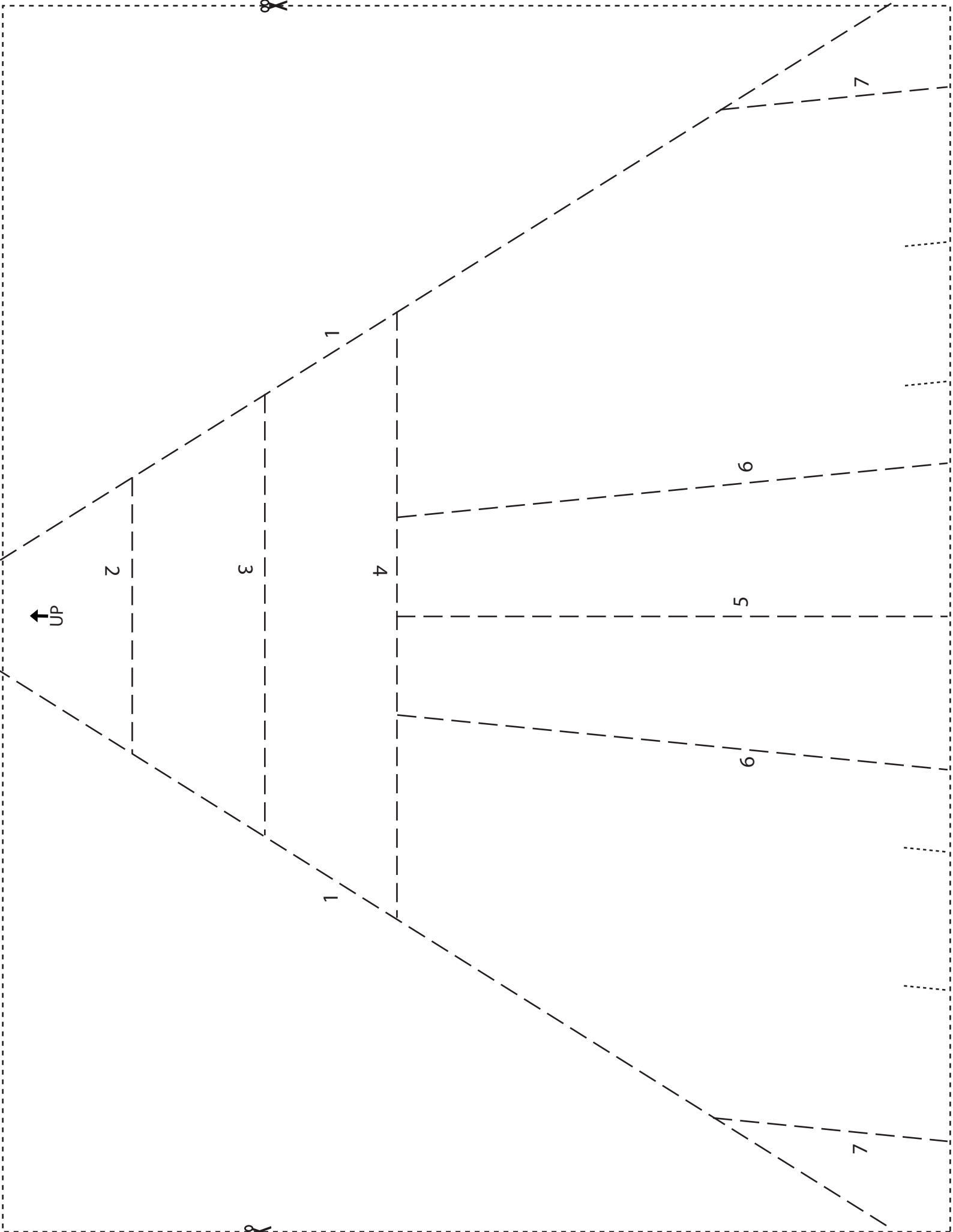


Flip the plane over and fold the right half over the left half along fold line 5 so that the outside edges of the wings line up.



Flip the wings down along fold lines 6 and the winglets up along fold lines 7. Cut two slits along the back edges of both wings for elevator adjustment. Add wing dihedral by tilting the wings up slightly away from the fuselage. The wings will have a slight “V” shape when viewed from the front. You are ready to fly!

CUT HERE



CUT HERE



UP